

Rang Dong

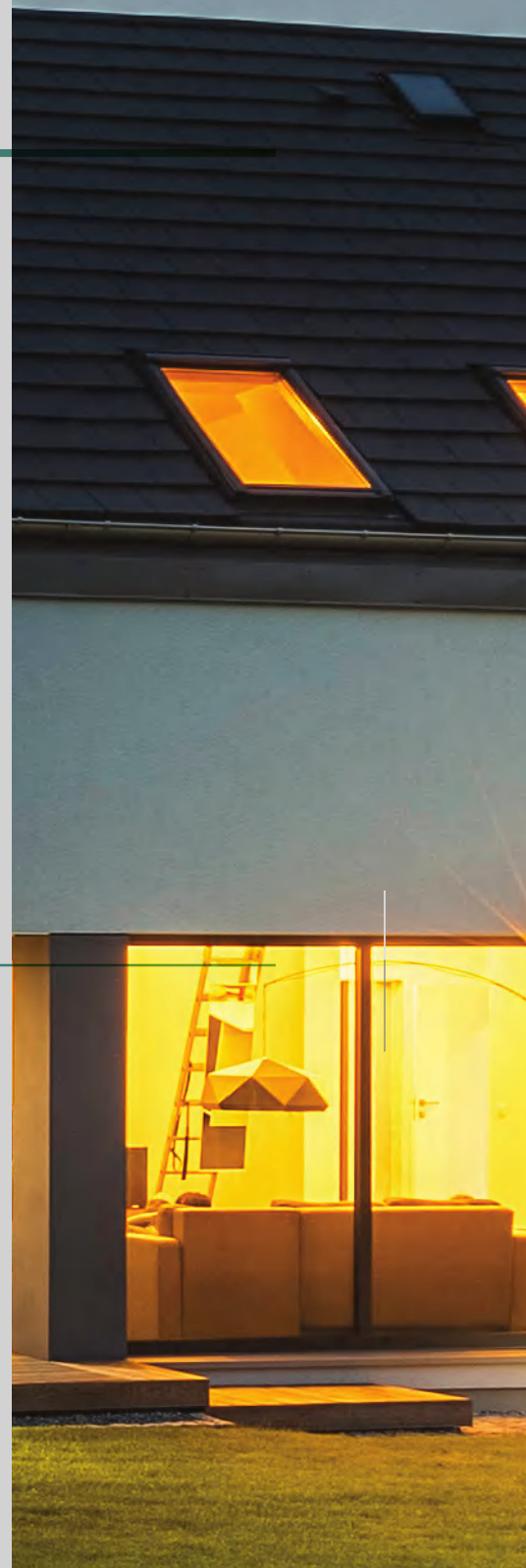
CATALOGUE

For Korean Market



Table Of Content

GENERAL LIGHTING	3
• LED Panel light	4
• LED Home lighting	7
• LED Downlight	8
• LED Bulb	13
• LED Tube	14
• LED Cross light	15
• LED Linear light	16
• LED Ceiling light	17
• LED Parking light & LED Batten light	21
• LED Track light	24
• Touch switch & Socket	25
AGRICULTURE LIGHTING	28
SMPS / DRIVER	33



GENERAL LIGHTING



LED PANEL LIGHT





EDGE-LIT LED PANEL LIGHT



Flicker free
Protect eyes from harm caused by flickering



Very high brightness
Thanks to energy efficient LEDs from Samsung/Seoul Semiconductor

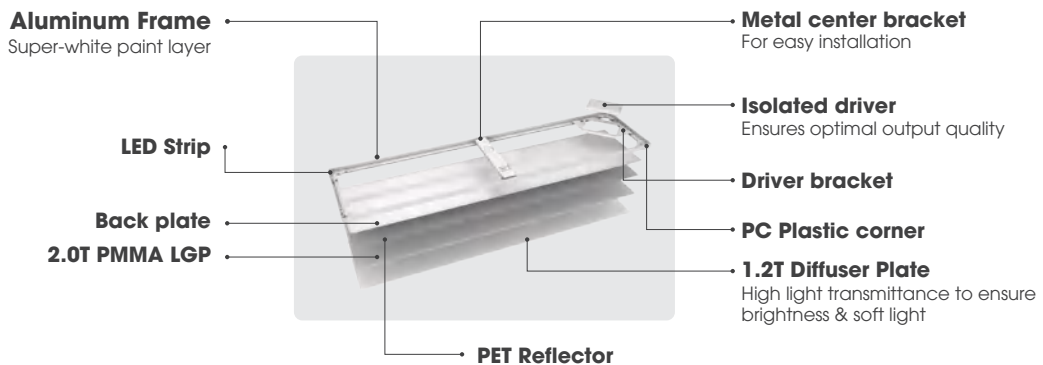


Eco-friendly
no mercury and harmful chemicals, not emit ultraviolet rays, safe for users



- Various designs available for different installation methods
- LEDs from world-renowned Korean brands (Samsung, Seoul Semiconductor)

STRUCTURE



SPECIFICATIONS

Model	Power (W)	Power factor	Luminous flux (lm)	Luminous efficacy (lm/W)	CRI (Ra)	CCT (K)	Size (mm)	Lifetime (hrs)
P01 180x1280/40W	40	0.9	4400	110	80	5700	1280x180x25	25000
P01 320x640/25W	25	0.9	2750	110	80	5700	640x320x25	25000
P01 320x1280/50W (3CCT)	50	0.9	5500	110	80	3000/ 4000/ 5700	1280x320x25	25000
P01 320x1280/50W	50	0.9	5500	110	80	5700	1280x320x25	25000
P01 520x520/40W	40	0.9	3600	90	80	5700	520x520x25	25000
P01 640x640/50W	50	0.9	5500	110	80	5700	640x640x25	25000

APPLICATIONS



BACK-LIT PANEL LIGHT



- Two designs available for different installation methods
- 50% more energy efficient than edge-lit LED panel light



Flicker free
Protect eyes from harm caused by flickering



Very high brightness
Thanks to energy efficient LEDs from Samsung / Seoul Semiconductor



No LGP needed
Competitive price

STRUCTURE

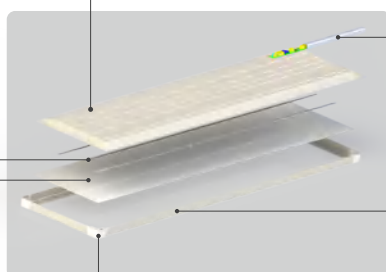
Back plate with optimal heat dissipation

Heat-reflective coating to increase optical efficiency

LED Strip

Diffuser Plate

High light transmittance to ensure brightness & soft light



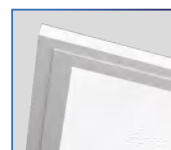
Non-isolated driver

Aluminum Frame

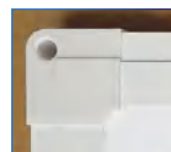
Super-white paint layer

PC corner

UL 94-V0



Recessed (M-bar)



Surface-mounted (M-bar Direct)

SPECIFICATIONS

Model	Power (W)	Power factor	Luminous flux (lm)	Luminous efficacy (lm/W)	CRI (Ra)	CCT (K)	Size (mm)	Lifetime (hrs)
M-bar Direct 1280x320/50W	50	0.9	5650	113	80	5700	1280x320x33	25000
M-bar Direct 1280x320/50W 3CCT	50	0.9	5650	113	80	3000-4000-5700	1280x320x33	25000
M-bar Direct 640x320/25W	25	0.9	2825	113	80	5700	640x320x25	25000
M-bar 640x640/50W	50	0.9	5650	113	80	5700	640x640x25	25000
M-bar 1280x320/50W	50	0.9	5650	113	80	5700	1280x320x25	25000

APPLICATIONS





LED HOME LIGHTING



Flicker free
Protect eyes from harm caused by flickering



Uniform and soft light
By using lens and PS diffuser

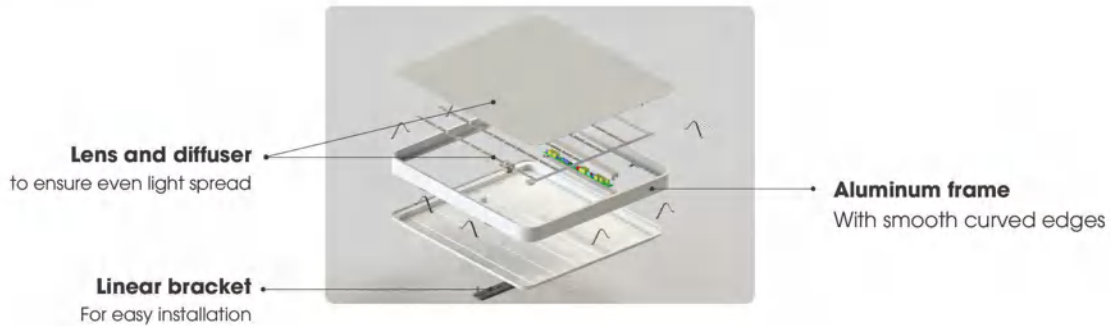


Aluminum frame
With smooth curved edges



• A light with esthetic outlook that elevates your room.

STRUCTURE



SPECIFICATIONS

Model	Power (W)	Power factor	Luminous flux (lm)	Luminous efficacy (lm/W)	CRI (Ra)	CCT (K)	Size (mm)	Lifetime (hrs)	KC No.
HL 500x500/50W	50	0.9	4500	90	80	5700K (selectable CCT option available)	500x500x70	25000	JU11385-21004 R-R-RSV-HL500X50050W
HL 540x540/50W	50	0.9	4500	90	80	5700K (selectable CCT option available)	540x540x47	25000	JU11385-21004 R-R-RSV-HL540X54050W

APPLICATIONS



LED DOWNLIGHT



CHARACTERISTICS:

- Use LED Packages from reputable Korean brands (Samsung, Seoul Semiconductor)
- Low power consumption: Downlights of die-cast aluminum series save more than 60-70% of energy compared to conventional compact light fixtures.
- High strength special design
- Optimal heat dissipation design
- High quality of light, CRI > 80
- Does not contain mercury and harmful chemicals, does not emit ultraviolet rays, safe for users
- Suitable for different spaces: office, school, exhibition, residence, hospital, etc.

STRENGTH:

- Long lifetime: 25,000 to 30,000 hours.
- High luminous efficacy.





LED DOWNLIGHT AT26



LED DOWNLIGHT AT28



LED DOWNLIGHT AT30



SPECIFICATIONS

Model	Power (W)	Power factor	Luminous flux (lm)	Luminous efficacy (lm/W)	CRI (Ra)	CCT (K)	Diameter (mm)	Cutout (Ø)	Lifetime (hrs)
-------	-----------	--------------	--------------------	--------------------------	----------	---------	---------------	------------	----------------

LED DOWNLIGHT AT26

AT26 60/7W	7	0.5	420	60	90	3000/ 4000/ 5000	70 ± 5	60	30000
AT26 75/12W	12	0.5	840	70	80	3000/ 4000/ 6500	85 ± 5	75	30000
AT26 90/20W	20	0.9	1300	65	90	3000/ 4000/ 5000	100 ± 5	90	30000
AT26 110/30W	30	0.9	1950	65	90	3000/ 4000/ 5000	125 ± 5	110	30000

LED DOWNLIGHT AT28

AT28 80/10W	10	0.9	550	55	90	3000/ 4000/ 5000	80 ± 5		30000
AT28 115/20W	20	0.9	1000	50	90	3000/ 4000/ 5000	115 ± 5		30000
AT28 150/30W	30	0.9	1500	50	90	3000/ 4000/ 5000	150 ± 5		30000
AT28 190/40W	40	0.9	2200	55	90†	3000/ 4000/ 5000	190 ± 5		30000

LED DOWNLIGHT AT30

AT30 46/3W	3	0.5	156	52	80	3000/ 4000/ 5000	55 ± 5	46	30000
AT30 50/4W	4	0.5	240	60	80	3000/ 4000/ 5000	65 ± 5	50	30000
AT30 55/8W	8	0.5	480	60	80	3000/ 4000/ 5000	65 ± 5	55	30000
AT30 75/15W	15	0.9	690	46	80	3000/ 4000/ 5000	80 ± 5	75	30000



LED DOWNLIGHT AT32



LED DOWNLIGHT AT34



LED DOWNLIGHT AT36



SPECIFICATIONS

Model	Power (W)	Power factor	Luminous flux (lm)	Luminous efficacy (lm/W)	CRI (Ra)	CCT (K)	Diameter (mm)	Cutout (Ø)	Lifetime (hrs)
-------	-----------	--------------	--------------------	--------------------------	----------	---------	---------------	------------	----------------

DOWNLIGHT AT32

AT32 50/5W	5	0.5	300	59	90	3000/ 4000/ 5000	57 ± 3	50	30000
AT32 60/9W	9	0.5	531	60	90	3000/ 4000/ 5000	65 ± 5	60	30000
AT32 75/12W	12	0.5	882	70	90	3000/ 4000/ 5000	83 ± 5	75	30000
AT32 90/20W	20	0.9	1440	72	90	3000/ 4000/ 5000	100 ± 5	90	30000
AT32 120/30W	30	0.9	2160	72	90	3000/ 4000/ 5000	130 ± 5	120	30000

DOWNLIGHT AT34

AT34 35/3W	3	0.5	150	50	80	3000/ 4000/ 5000	40 ± 3	35	30000
AT34 60/8W	8	0.5	320	40	80	3000/ 4000/ 5000	64 ± 2	60	30000
AT34 25/2W	2	0.5	80	40	80	3000/ 4000/ 5000	30 ± 3	25	30000
AT34 55/4W	4	0.5	220	55	90	3000/ 4000/ 5000	60 ± 5	55	30000
AT34 120/12W	12	0.5	774	62	90	3000/ 4000/ 5000	80 ± 5	70	30000

DOWNLIGHT AT36

AT36 100x100/12W	12	0.5	900	75	80	3000/ 4000/ 5000	(120x120) ± 5	100x100	30000
AT36 150x150/20W	20	0.9	1600	80	80	3000/ 4000/ 5000	(170x170) ± 5	150x150	30000
AT36 200x200/25W	25	0.5	2125	80	80	3000/ 4000/ 5000	(215x215) ± 5	200x200	30000



LED DOWNLIGHT AT04



LED DOWNLIGHT AT05.V3



LED DOWNLIGHT AT22



SPECIFICATIONS

Model	Power (W)	Power factor	Luminous flux (lm)	Luminous efficacy (lm/W)	CRI (Ra)	CCT (K)	Size (ØxH) (mm)	Cutout (Ø)	Lifetime (hrs)
-------	-----------	--------------	--------------------	--------------------------	----------	---------	-----------------	------------	----------------

LED DOWNLIGHT AT04, DIE-CAST HEATSINK

AT04 155/16W	16	0.5	1600	100	80	3000/ 4000/ 5000	180x44	155	30000
AT04 200/25W	25	0.5	2500	100	80	3000/ 4000/ 5000	240x50	200	30000

LED DOWNLIGHT AT05, STEEL HOUSING

AT05 155/10W	10	0.9	1050	105	80	3000/ 4000/ 5700	180x60	155	25000
AT05 155/12W	12	0.9	1260	105	80	3000/ 4000/ 5700	180x60	155	25000
AT05 155/15W	15	0.9	1575	105	80	3000/ 4000/ 5700	180x60	155	25000
AT05 155/20W	20	0.9	2100	105	80	3000/ 4000/ 5700	180x60	155	25000
AT05 155/15W AC-IC	15	0.9	1350	90	80	3000/ 4000/ 5700	180x60	155	25000

LED DOWNLIGHT AT22, ROTATABLE

AT22 60/7W	7	0.5	300/350/350	42/50/50	90	3000/ 4000/ 5000	72x93	60	30000
AT22 60/9W	9	0.5	500/550/550	55/61/61	90	3000/ 4000/ 5000	72x93	60	30000
AT22 60/12W	12	0.5	630/700/700	52/58/58	90	3000/ 4000/ 5000	72x93	60	30000



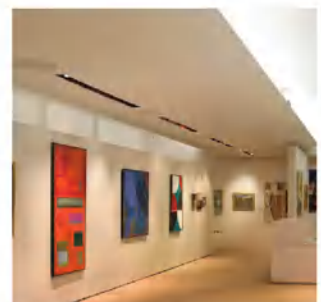
LED DOWNLIGHT AT25

SPECIFICATIONS

Model	Power (W)	Power factor	Luminous flux (lm)	Luminous efficacy (lm/W)	CRI (Ra)	CCT (K)	Size (mm)	Cutout (Ø)	Lifetime (hrs)
AT25 80/10Wx1.PLUS	10	0.9	750	75	80	3000/ 4000/ 6500	Ø85x76	80	30000
AT25 80x80/10Wx1.PLUS	10	0.9	750	75	80	3000/ 4000/ 6500	80x80x76	80x80	30000
AT25 80x160/10Wx2.PLUS	10	0.9	1500	75	80	3000/ 4000/ 6500	88x168x76	80x160	30000
AT25 80x240/10Wx3.PLUS	10	0.9	2250	75	80	3000/ 4000/ 6500	88x248x76	80x240	30000
AT25 160x160/10Wx4.PLUS	10	0.9	3000	75	80	3000/ 4000/ 6500	168x168x76	160x160	30000
AT25 100/16Wx1.PLUS	16	0.9	1040	65	80	3000/ 4000/ 6500	Ø109 x 88	Ø100	30000
AT25 108x108/16Wx1.PLUS	16	0.9	1040	65	80	3000/ 4000/ 6500	115x115x88	108x108	30000
AT25 108x208/16Wx2.PLUS	16	0.9	2080	65	80	3000/ 4000/ 6500	115x216x88	108x208	30000
AT25 108x308/16Wx3.PLUS	16	0.9	3120	65	80	3000/ 4000/ 6500	115x317x88	108x308	30000
AT25 208x208/16Wx4.PLUS	16	0.9	4160	65	80	3000/ 4000/ 6500	216x216x88	208x208	30000



APPLICATIONS





LED BULB



- A perfect replacement for an incandescent lamp
- Up to 80% energy saving compared with conventional light bulbs



Instant full light on

Provide full level of brightness immediately upon switching on



Eco-friendly

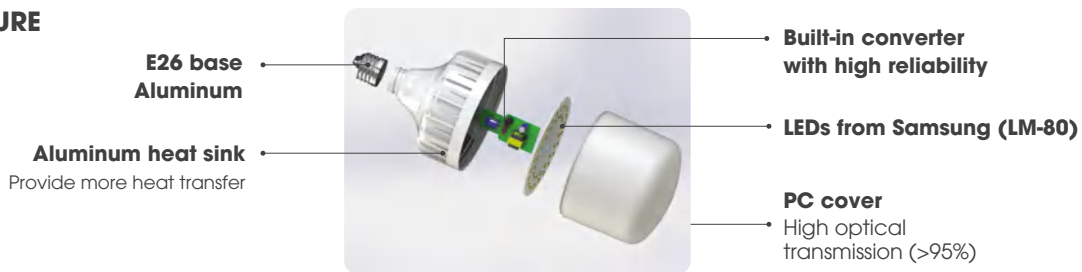
No UV/IR radiation,
No mercury,
Flicker free



Good heat dissipation

With high-quality frosted PC cover and die-casting aluminum heat sink

STRUCTURE



SPECIFICATIONS

Model	Power (W)	Power factor	Luminous flux (lm)	Luminous efficacy (lm/W)	CRI (Ra)	CCT (K)	Size (mm)	Lifetime (hrs)	KC No.
-------	-----------	--------------	--------------------	--------------------------	----------	---------	-----------	----------------	--------

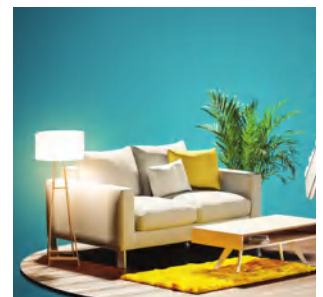
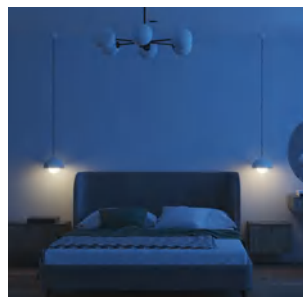
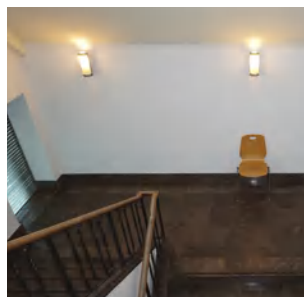
LED BULB, A SERIES

A60 8W AC-IC	8	0.5	720/760	90/95	83	3000/ 6500	60x109	15000	
A60 10W AC-IC	10	0.5	900/950	90/95	83	3000/ 6500	60x109	15000	
A60 12W AC-IC	12	0.5	1080/1140	90/95	83	3000/ 6500	60x123	15000	

LED BULB, T SERIES

TR100N2 27W	27	0.9	2300/2500	85/92	80	3000/ 6500	100x185	25000	JU11385-18006 R-R-RSV-TR812-36W6500K
TR120N2 36W	36	0.9	3200/3600	88/100	80	3000/ 6500	120x210	25000	JU11385-18006 R-R-RSV-TR812-36W6500K
TR100 30W AC-IC	30	0.5	2700/2850	90/95	83	3000/ 6500	100X185	15000	
TR120 40W AC-IC	40	0.5	3600/3800	90/95	83	3000/ 6500	120X208	15000	

APPLICATIONS



LED TUBE



High luminous efficacy (up to 150lm/W)

Consume just 15.5W to produce 2300 lumens



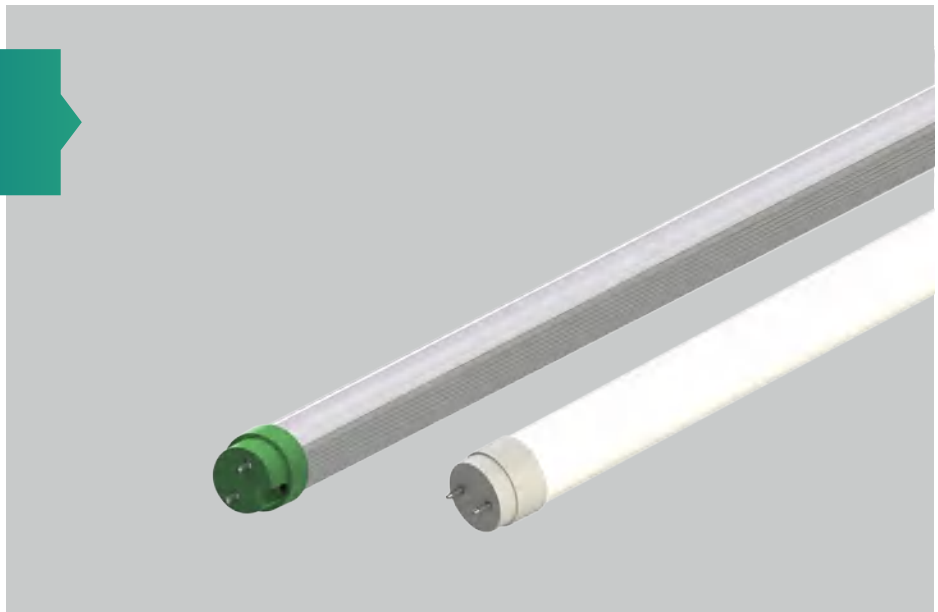
Wide beam angle of 270°

Help spread the light out further while eliminating glare



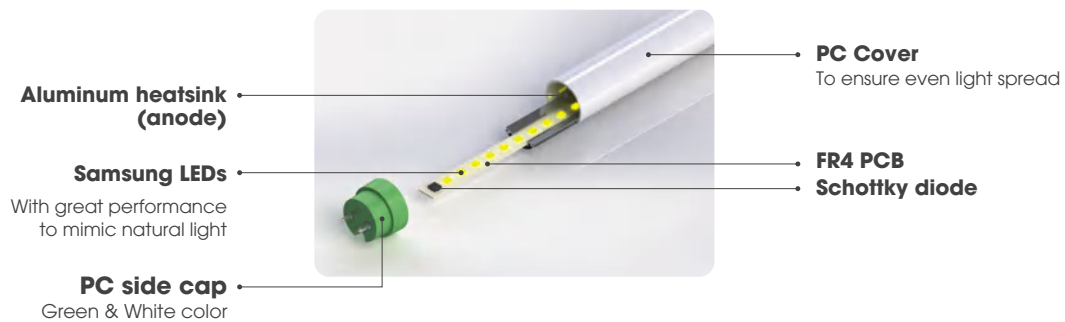
Compatible with most ballasts

A perfect replacement for a fluorescent lamp



- G13 Base
- Single end powered
- This LED Tube light can be replaced easily, quickly and safely, without rewiring

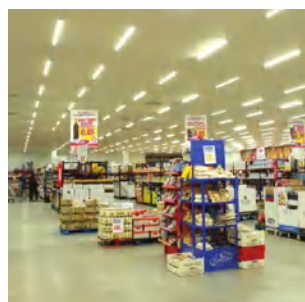
STRUCTURE



SPECIFICATIONS

Model	DC Power (W)	Luminous flux (lm)	Luminous efficacy (lm/W)	CRI (Ra)	CCT (K)	Size (mm)	Lifetime (hrs)
T8 1200/15W PC	15.5	2300	150	80	5700	1213x26	25000
T8 1200/17W PC	17	2550	150	80	5700	1213x26	25000
T8 1200/21W PC	21	2900	138	80	5700	1213x26	25000
T8 1200/15W AL-PC	15.5	2300	150	80	5700	1213x26	25000
T8 1200/17W AL-PC	17	2550	150	80	5700	1213x26	25000
T8 1200/21W AL-PC	21	2900	138	80	5700	1213x26	25000

APPLICATIONS





LED CROSS LIGHT



- Easy installation/ Power saving/ Long life span



Energy-efficient
Save up to 50% energy compared to a fluorescent lamp

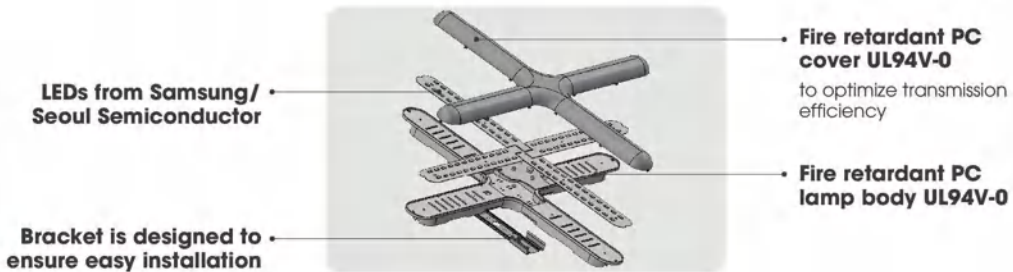


Uniform illumination
Light is spread evenly



Built-in power supply
Save space and easy to install

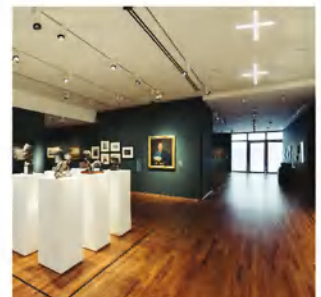
STRUCTURE



SPECIFICATIONS

Model	Power (W)	Power factor	Luminous flux (lm)	Luminous efficacy (lm/W)	CRI (Ra)	CCT (K)	Lifetime (hrs)	KC No.
D CT01L 60X60/50W	50	0.5	4300 (6500K) 3900 (3000K)	86 (6500K) 78 (3000K)	80	3000 6500	25000	SU11568-18001

APPLICATIONS



LED LINEAR LIGHT



- Maximum brightness - Maximum effect
- A design that fits everywhere with a modern round curve



Energy-efficient
Save up to 50% energy compared to a fluorescent lamp

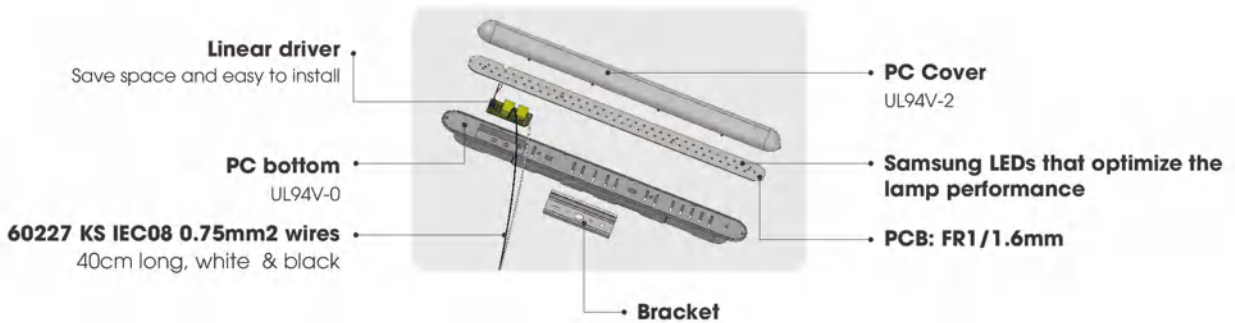


Uniform illumination
Light is spread evenly



Built-in power supply
Save space and easy to install

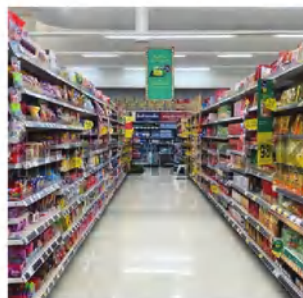
STRUCTURE



SPECIFICATIONS

Model	Power (W)	Power factor	Luminous flux (lm)	Luminous efficacy (lm/W)	CRI (Ra)	CCT (K)	Lifetime (hrs)	KC No.
D C101L 60/30W	30	0.5	2300 (6500K) 2100 (3000K)	77 (6500K) 70 (3000K)	80	3000 6500	25000	SU11568-18001 R-R-RSV-DC101L6030W

APPLICATIONS



LED CEILING LIGHT



LED CEILING LIGHT



MODEL:
CL 450/50W
CL 550/60W

• A light with aesthetic outlook that elevates your room.



Simple design
Suitable for minimalist style



Long life span
Thanks to the great performance of high-quality LEDs

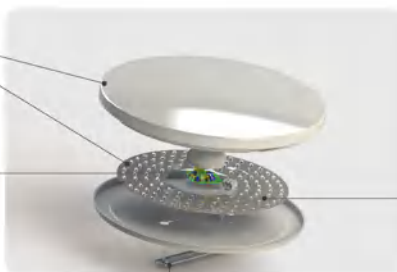


Smooth lighting
Help boost energy and mood levels

STRUCTURE

Lens + PS diffuser
Uniform illumination, no dark spots

Driver with excellent performance
Flicker-free, can be converted to 2-channel driver for CCT selectable option



• **High-grade LEDs from Samsung/ Seoul Semiconductor**

• **Easy to install, close to the ceiling surface**

SPECIFICATIONS

Model	Power (W)	Power factor	Luminous flux (lm)	Luminous efficacy (lm/W)	CRI (Ra)	CCT (K)	Size (mm)	Lifetime (hrs)	KC No.
CL 450/50W	50	0.9	4500	90	80	3000/ 5700/ 6500 (selectable CCT option available)	450x100	25000	R-R-RSV-CLDM55060W
CL 550/60W	60	0.9	5400	90	80	3000/ 5700/ 6500 (selectable CCT option available)	550x100	25000	R-R-RSV-CLDM55060W

APPLICATIONS





REMOTE CONTROL ROUND CEILING LIGHT

SMART REMOTE CONTROL

Easily set and save your ideal lighting ambiance with a handy remote that provides total control of all your lighting functions.



Sleep mode

Select 2 levels of brightness with CCT of 3000K for sleep mode:

- Press the Sleep button: 5% brightness
- Press that button again: 10% brightness



Adjustable brightness

You can easily adjust the brightness to the levels as desired: 10%, 25%, 50%, 75%, 100%



Adjustable Color

Choose your lighting color with 5 levels: 3000K, 3500K, 4000K, 5000K, 6500K. Complete control is in your hands!



Timer setting function

Automatically turns off after 30 minutes when timer is set
Cancel timer with X button

SENSORY CEILING LIGHT



- Two shapes with different sizes available for your choice.
- Incorporated with PIR sensor
- Convenient for the elderly and children



Super slim
Thickness of 18mm, elegant design



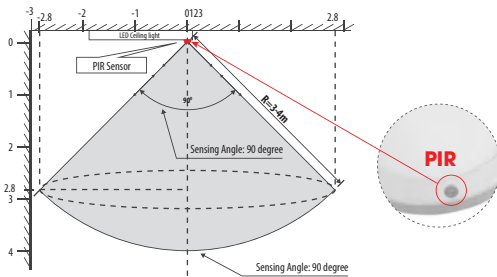
Long life span
Thanks to the modularized LED light source attached with optimized optical lens



Soft lighting
High brightness, high CRI and flicker free

CHARACTERISTICS

PIR Sensor Working Principle



Detection operating time: 30s



Surface mounted



Built-in driver

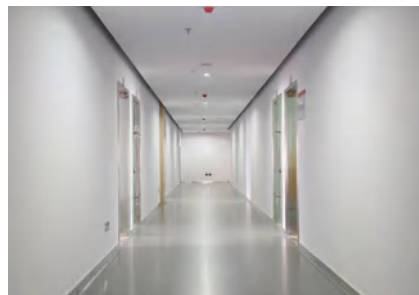
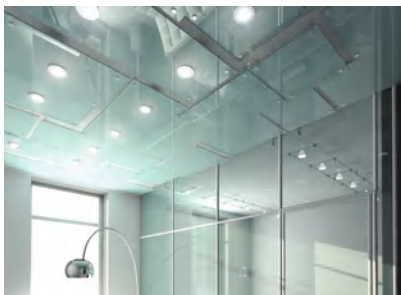


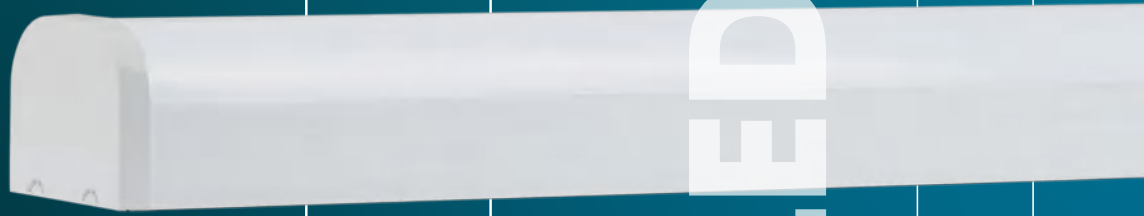
PIR sensor

SPECIFICATIONS

Model	Power (W)	Power factor	Luminous flux (lm)	Luminous efficacy (lm/W)	CRI (Ra)	CCT (K)	Size (mm)	Lifetime (hrs)
LN11 220/18W.PIR	18	0.5	1500	85	80	3000/ 4000/ 5000/ 5700/ 6500	220x18	25000
LN10 220x220/18W.PIR	18	0.5	1500	85	80	3000/ 4000/ 5000/ 5700/ 6500	220x220x18	25000

APPLICATIONS





LED PARKING LIGHT & BATTEN LIGHT

LED PARKING LIGHT



- Smooth curved cover with 2 sizes available (600mm, 1200mm)
- Perfect for both domestic and commercial applications



Flicker free
Protect eyes from harm caused by flickering



Elegant and simple design
Suitable for most architectural styles

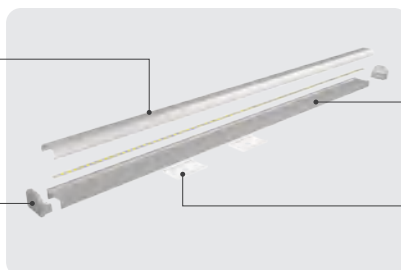


Energy saving
Thanks to LED technology

STRUCTURE

PC cover
Ensures even light distribution without visible dark spots and glare

Anti-light PC side cap
Prevent light to travel through



- **High-quality aluminum body**
Optimal heat dissipation, protecting the luminaire from corrosion and rust
- **Stainless steel bracket**
Convenient and secure installation

SPECIFICATIONS

Model	Power (W)	Power factor	Luminous flux (lm)	Luminous efficacy (lm/W)	CRI (Ra)	CCT (K)	Size (mm)	Lifetime (hrs)
D PAR.01 60/20W	20	0.9	2200	110	80	5700	600x58x46	25000
D PAR.01 120/40W	40	0.9	4400	110	80	5700	1200x58x46	25000
D PAR.02 60/20W	20	0.9	2200	110	80	5700	600x58x46	25000
D PAR.02 120/40W	40	0.9	4400	110	80	5700	1200x58x46	25000

APPLICATIONS





LED BATTEN LIGHT IP65



Flicker free

Protect eyes from harm caused by flickering



Elegant and futuristic design

Reflect your style and delight the space



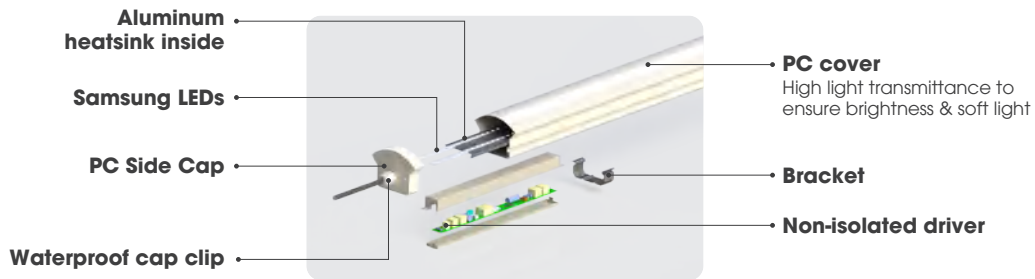
IP65

Suitable for wet and damp places

MODEL:
M28.F 1200/40W

• Tri-proof: Strictly designed for waterproof, dustproof and corrosion-proof performance

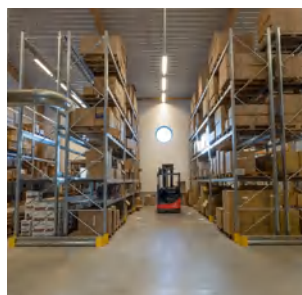
STRUCTURE



SPECIFICATIONS

Model	Power (W)	Power factor	Luminous flux (lm)	Luminous efficacy (lm/W)	CRI (Ra)	CCT (K)	Size (mm)	Lifetime (hrs)	KC No.
M28.F 1200/40W	40	0.9	4400	110	80	5700	1200x75x55	25000	JJU11385-21002 R-R-RSV-BT1200

APPLICATIONS



LED TRACK LIGHT



- Available in two colors (black, white) suitable for any installation space with hanging rails
- Flexible rotation angle: 360 degree rotation and 90 degree folding on the mount
- Suitable for spot lighting or beaming in fashion shops, supermarkets, stores, malls, etc.



Multiple color temperature levels

6500K / 5000K / 4000K / 3000K



Long lifetime

Up to 25,000 hours

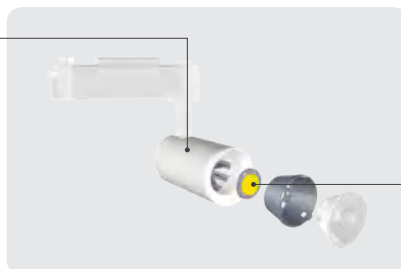


High quality of light

CRI > 80, faithfully reflect the color of the object

STRUCTURE

The lamp housing uses pure aluminum, outstanding heat dissipation, contributing to increased lamp life

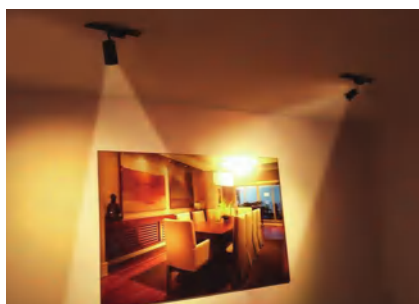


Use optical lens to create uniform optical distribution, for clear images.

SPECIFICATIONS

Model	Power (W)	Power factor	Luminous flux (lm)	Luminous efficacy (lm/W)	Beam angle (°)	CCT (K)	Size (mm)	Lifetime (hrs)
TRL05 10W	10	0.5	900	90	24	4000/5000/6500	50x210x160	25000
TRL05 15W	15	0.5	1650	110	24	4000/5000/6500	60x145x160	25000
TRL05 20W	20	0.5	1800	90	24	4000/5000/6500	50x210x160	25000
TRL05 30W	30	0.5	2700	90	24	4000/5000/6500	60x250x210	25000

APPLICATIONS





TOUCH SWITCH & SOCKET



TOUCH SWITCH

PRODUCT APPLICATION



Remote control via Internet



Unlimited scenario settings



ON / OFF induction



Wireless connection via Bluetooth

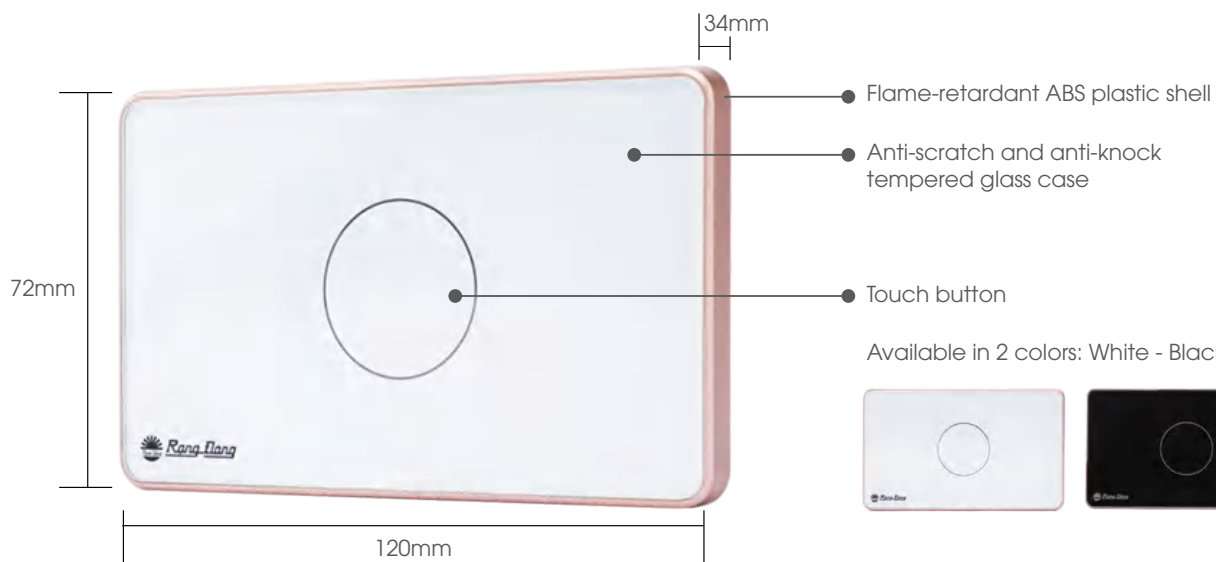


Replace 1:1 mechanical switch



On / Off timer

Control App compatible with Android and IOS



1 button



RD-CT 01.01

2 buttons



RD-CT 01.02

3 buttons



RD-CT 01.03

4 buttons



RD-CT 01.04



OCAT01 1C/16A

***Description:**

- Available in two colors (black, white) suitable for any installation space
- Safe for the elderly and children
- Easy installation without replacing power lines
- Protect electrical appliances in the house

***Strength:**

- Anti-electric shock: Automatic power off when leakage current > 30mA
- Multi-purpose socket surface: Compatible with a variety of plugs on the market
- Integrated power indicator light and anti-shock test button: Periodic inspection during use
- Compact aesthetic design: Standard compact design, high aesthetic



OC04 4C/3M/10A ; OC04 4C/5M/10A

***Description:**

- Available in 2 lengths (3m/ 5m) to flexibly move to different position depending on the needs of use
- Safe for the elderly and children
- Protect electrical appliances in the house

***Strength:**

- Anti-electric shock: Automatic power off when leakage current > 30mA
- Multi-purpose socket surface: Compatible with a variety of plugs on the market
- Integrated power indicator light and anti-shock test button: Periodic inspection during use
- Optimized design: Using super-elastic specialized copper, the On/Off switch integrates an overload protection relay.



OC04.USB 3C/3M/10A ; OC04.USB 3C/5M/10A

***Description:**

- Available in 2 lengths (3m/ 5m) to flexibly move to different position depending on the needs of use
- Integrated 2 USB charging ports, convenient for phone and tablet users...
- Safe for the elderly and children
- Protect electrical appliances in the house

***Strength:**

- Anti-electric shock: Automatic power off when leakage current > 30mA
- Multi-purpose socket surface: Built-in 02 USB 5V 2A ports, compatible with a variety of plugs on the market
- Integrated power indicator light and anti-shock test button: Periodic inspection during use
- Optimized design: Using super-elastic specialized copper, the On/Off switch integrates an overload protection relay.

AGRICULTURE LIGHTING



LED TUBE LIGHT



- The light spectrum is suitable for Tissue Culture - Growing Vegetables - Cordyceps- Mushrooms - Chili
- The lamp has a protection class IP65, and works well in environments with high humidity
- Lamp is designed with high quality: applied with LED technology for wide beam angle, high color rendering, lifespan up to 25 000 hours and easy to install
- Without Pb, Hg and other pollution elements, causing no harm to the environment.

SPECIFICATIONS

Model	Power (W)	Power factor	Luminous flux (lm)	Photosynthetic Photon Flux	Beam angle (°)	CCT (K)	Size (mm)	Lifetime (hrs)	IP
-------	-----------	--------------	--------------------	----------------------------	----------------	---------	-----------	----------------	----

T5 LED TUBE LIGHT

T5LT.GR1 120/25W	25	0.9	2000	45	120	3500	1230 x 33 x 36	25000	IP65
T5LT.GR4 120/25W	25	0.9	2400	40	120	3500	1230 x 33 x 36	25000	IP65

T8 LED TUBE LIGHT

T8LT.GR1 120/30W	30	0.9	2400	55	120	3500	1230 x 33 x 36	25000	IP65
T8LT.GR4 120/30W	30	0.9	3000	50	120	3500	1230 x 33 x 36	25000	IP65

UFO HIGHBAY LIGHT



- Optimal heatsink design increases more airflow for better heat dissipation.
- High weather resistance thanks to premium PC optical material.
- IP65 waterproof grade and IK08 impact protection. The product is equipped with safety ropes to provide double protection
- There are three spectral peaks 410 nm, 450 nm, 605 nm using 3000K spectral background
- Specialized WBU spectrum, has a good spectrum for plants: fruit trees, vegetable, mushroom, algae, orchids, etc.

SPECIFICATIONS

Model	Power (W)	Power factor	Luminous flux (lm)	Photosynthetic Photon Flux	Beam angle (°)	CCT (K)	Size (Ø x H) (mm)	Lifetime (hrs)	Degrees of protection provided by enclosures
HB03.WBU 330/150W	150	0.9	13500	190	120	3000	330 x 140	30000	IP65
HB03.WBU 395/200W	200	0.9	18000	250	120	2000	395 x 190	30000	IP65



**LED LIGHT FOR
CHRYSANTHEMUM GROWING**

MODEL:
TR60/ A60

Power: 9W
Photosynthetic Photon Flux (PPF): 11 - 12 $\mu\text{mol/s}$



**LED LIGHT FOR
DRAGON FRUIT GROWING**

MODEL:
TL-T60 WFR/9W

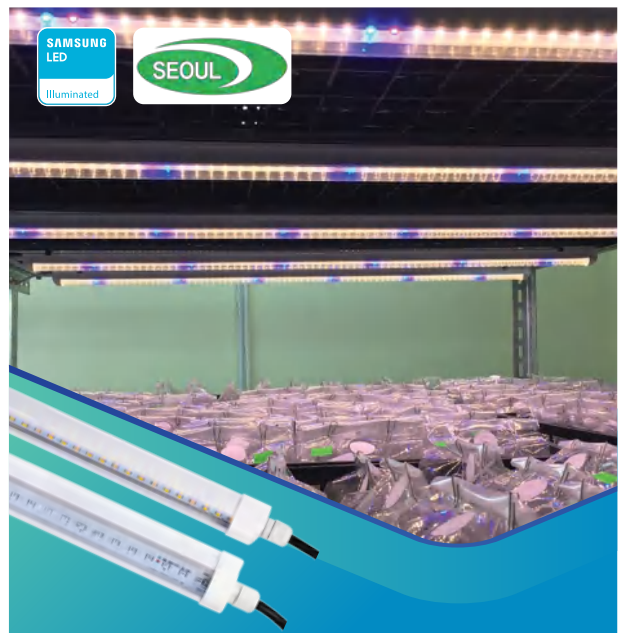
Power: 9W
Photosynthetic Photon Flux (PPF): 12 $\mu\text{mol/s}$



**LED LIGHT FOR
SPIRULINA CULTIVATION**

MODEL:
T25W 120/ BR

Power: 25W
Photosynthetic Photon Flux (PPF): 26 $\mu\text{mol/s}$



**LED LIGHT FOR
MEDICINAL PLANT BREEDING**

MODEL:
NCM 1200/ 25W WBU

Power: 25W
Photosynthetic Photon Flux (PPF): 36 $\mu\text{mol/s}$



LED LIGHT FOR MEDICINAL PLANT BREEDING

MODEL:
DN 120/2x25W WBR 220V (SMART)

Power: 50W
Photosynthetic Photon Flux (PPF): 80 $\mu\text{mol/s}$



LED LIGHT FOR PAPRIKA CULTIVATION

MODEL:
HB03.BR/330/150W

Power: 150W
Photosynthetic Photon Flux (PPF): 190 $\mu\text{mol/s}$



LED LIGHT FOR GREENHOUSE

MODEL:
HB03.WBU/330/150W

Power: 150W
Photosynthetic Photon Flux (PPF): 190 $\mu\text{mol/s}$



LED LIGHT FOR GREENHOUSE

MODEL:
TRNN1/50W WBU

Power: 50W
Photosynthetic Photon Flux (PPF): 85 $\mu\text{mol/s}$



LED LIGHT FOR VEGETABLE GROWING

MODEL:

TRR01 1200/25W (30B/70R or WR)

Power: 25W

Photosynthetic Photon Flux (PPF): 30 - 32 $\mu\text{mol/s}$



LED LIGHT FOR TISSUE CULTURE

MODEL:

10W/16W (BR, WR, WBU)

Power: 10W/16W

Photosynthetic Photon Flux (PPF): 14-22 $\mu\text{mol/s}$



LED BARS LIGHT FOR ALL PLANTS GROWING (GINSENG, MUSHROOMS, PAPRIKA, ETC.)

MODEL:

RD-720/277V-HE-V1.1 (100 ÷ 277 VAC)
RD-720/480V-HE-V2.1 (277 ÷ 480 VAC)

Power: 720W

Photosynthetic Photon Flux (PPF): 1850 $\mu\text{mol/s}$

Size (LxWxH): 1187x1085x81

CHARACTERISTICS:

- Profile Design Lightest in class HPS replacement (26 lbs) with a thin concealed-driver design
- High PBAR Output & Efficacy with Philips chipsets
- Entourage Spectrum: High CRI 94 with 730 nm Far-Red wavelengths essential for boosting healthy growth
- Integrated Dimming System: down to 10 % using a smart controller.

SMPS / DRIVER





NON-ISOLATED SMPS (DRIVER)

15.5mm width, PF > 0.92
 1CCT and 3CCT selectable
 High quality with very low output current ripple < 5%
 Very low THD < 10%
 High efficiency (> 89%)
 High reliability, lifespan up to 30,000 hours (max. 10% failure rate)



EXTERNAL SMPS (DRIVER) FOR LED TUBE LIGHT

PF > 0.95
 Low THD < 15% and safe-guaranteed (SELV)
 High Surge Protection (up to 2kV)
 High reliability, lifespan up to 30,000 hours (max. 10% failure rate)



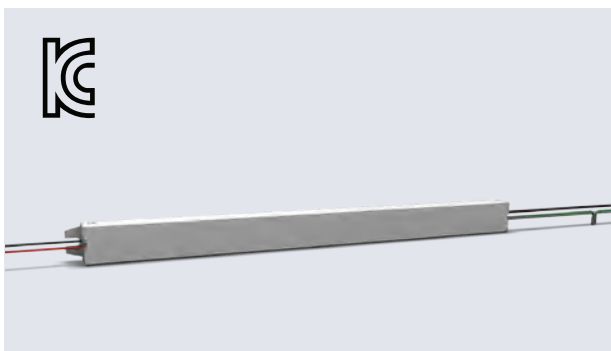
SLIM FLYBACK ISOLATED SMPS (DRIVER)

15.5mm width, PF > 0.92, flicker free
 High quality with very low output current ripple < 5%
 Very low THD < 10% and safe-guaranteed (SELV)
 High reliability, lifespan up to 30,000 hours (max. 10% failure rate)



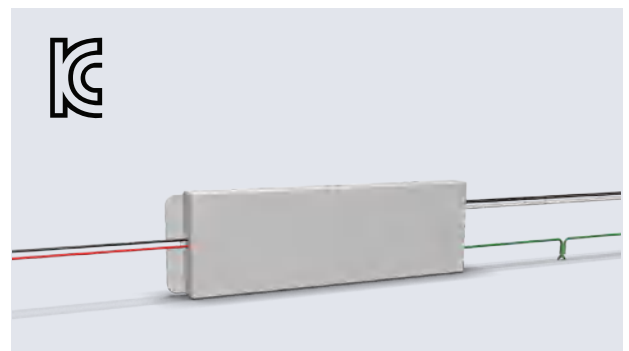
OUTDOOR HIGH POWER SMPS (DRIVER)

Isolated LED driver designed for class I LED luminaires
 Constant Current Control
 High Efficiency & Active Power Factor Correction
 Protection: OVP, OPP and OTP
 Application: Suitable for operation with LED modules only



SLIM RESONANT SMPS (DRIVER)

15.5mm width, PF > 0.92
 High quality with very low output current ripple < 5%
 Very low THD and safe-guaranteed (SELV)
 High reliability, lifespan up to 30,000 hours (max. 10% failure rate)





ULTRA SLIM RESONANT SMPS (DRIVER)


13.5mm width, PF > 0.95
 High quality with very low output current ripple < 5%
 Very low THD and safe-guaranteed (SELV)
 High reliability, lifespan up to 30,000 hours (max. 10% failure rate)


RANG DONG LIGHT SOURCE AND VACUUM FLASK JOINT STOCK COMPANY

 **Head office/Factory no.1:**
87-89 Ha Dinh Str., Thanh Xuan Dist., Hanoi, Vietnam.

 **Factory no.2:**
Que Vo Industrial Area, Bac Ninh province

 www.rangdong.com.vn

 +84 24 38584310

 export@rangdong.com.vn

